

General Catalogue





Andreu Barberá. Metallic door manufacturers. Opening a future since 1972.

We found the origin of Andreu Barberá, S.L. in 1972, year in which Mr. Vicente Andreu Bort, today our President, founded a small metal carpentry, which over the years would become a great Company, solid and of great prestige, and the Spanish brand of reference in the metallic doors' sector: Andreu.

That same year, as a result of his zeal for improvement and entrepreneurship, he designed and patented a new model of multi-purpose metallic door, also made with his own exclusive system. It was the one that later would be known in Spain as the ENSAMBLADA door.

This fact meant a milestone for both the newly created company and for the market in general, revolutionizing it and paving the way towards standardizing measures and uniformity in the finishes for this kind of product. Proof of this is that, today, almost all of the metallic swinging doors that are manufactured in Europe are made using both designs and production systems that are very similar to the one developed by Andreu over 40 years ago.

With the experience and knowledge acquired, and to meet a demand of a market that is increasingly growing, in the early 80s we developed a more technical and specialized product: the Fire Doors, which has ended up becoming a true banner and covering letter for Andreu, both nationally and internationally.

Years later, well into the 90s, we launched our line of more aesthetic, elegant doors: the RESIDENTIAL family, coming to complete an already wide range

of products, which makes our customers perceive us as a preferred option, with a global response to their needs.

Backed by our track record, every day we open new doors to the imagination by putting all the means at your disposal to innovate our offer of MULTI-PURPOSE, FIRE and RESIDENTIAL metallic doors with customized solutions, tailored to every need.

We have the most technologically advanced production systems and a great human team that allows us to meet an increasingly complex and demanding market. We are experts in bringing new ideas to our customers' projects and in providing each new model with an added value, quality guarantee.

In this sense, to ensure our customers the quality of our products and the design, production and marketing processes, we have the Quality Management System implemented and certified by AENOR according to the Standard UNE-EN-ISO 9001:2008.

In Andreu we work to open new doors to the future.

The photographs and drawings in this catalog are owned by Andreu Barberá, S.L. and they are not contractual. The Company reserves the right to modify the characteristics without prior notice. The pictures shown may not be fully consistent with the specifications of the standard product range of doors and accessories

Reserve the right to any changes in our models, due to technical, aesthetic or commercial needs

When this catalog is no longer useful to you, help us to conserve the environment by recycling paper in the appropriate container.

03 Fire Doors

- 04 Delta
- 06 Turia
- 08 Turia Premium
- 10 Turia DH DSA
- 12 Fono-Turia
- 14 Sigma
- 16 Rodas
- 18 Meter doors
- 20 CoBo System
- 22 Accesories

25 Multi-purpose

- 26 Ensamblada
- 28 Office
- 30 Office Slide
- 32 Office Vaiven
- 34 Stam
- 36 Neo
- 38 Accessories

41 Residential

- 42 Versate
- 44 Line
- 46 Compact
- 48 Rustik
- 50 Hispani
- 52 Forsa
- 54 Accessories

56 Manufacturing possibilities

7 28 39

29

20

18

31

40





Fire Doors

Safety, Union and Design

One of the main concerns and obligations of Architects & Builders is to design and build ever safer and livable buildings. Safety begins with prevention and the correct choice of materials and products; including Fire doors, essential to combat the devastating force of an element as destructive as fire. Therefore, the current legislation establishes the obligation to use Fire doors with the adequate fire-resistance capacity in certain locations.

In Andreu, we have been developing increasingly advanced technological solutions for more than 40 years. The Fire door's family is the result of this work and of the long experience in the manufacture of high quality Metallic Doors.

Delta

Fire Door EI₂ 60



Basic and reliable.

This is a 1 leaf Fire door, of easy installation and maintenance. Its leaf comprises two 0.7mm thick steel plates, assembled without welding.

With a 62mm thickness, it houses a combination of fire-resistant insulation materials in its interior that give it an EI₂ 60 C5 classification.

Available only in 1 leaf, it mounts 2 hinges with CE marking and an anti-crow bar bolt between them. It is supplied with CS5 corner frame, ready to install on site with mortar or with screws.

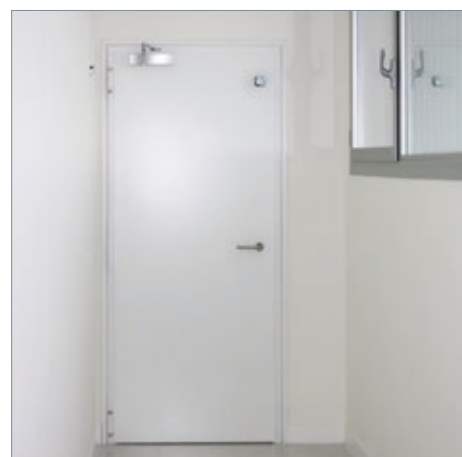
Antifinger

9010 White
7035 Grey

Oak
Rustic Oak

Other RAL to select





Turia

Fire Door EI₂ 30-60-90-120



Versatile and adaptable to your needs.

The Turia Fire door is the model that puts the greatest manufacturing options at your disposal, both in terms of measurements and special accessories. It is available in versions of 1 and 2 leaves, the latter with the possibility of asymmetry.

For the EI₂ 30, 60 and 90 classifications, the leaf is 63mm thick, and it is constructed with two 0.8mm thick sheets assembled without welding. In the case of EI₂ 120 a third sheet is added, that gives it a leaf thickness of 74mm.

Assembles 3 own design hinges with CE marking (4 for EI₂ 120). Corner frame model CS5 ready to be installed on site with mortar or by screwing it on an approved metallic sub-frame.

Antifinger

9010 White
7035 Grey

Stainless Steel

Other RAL to select





Turia Premium

Fire Door EI₂ 60 / 120



This is the more robust Fire door, in 1 or 2 leaves, lacquered in RAL with stainless steel hardware.

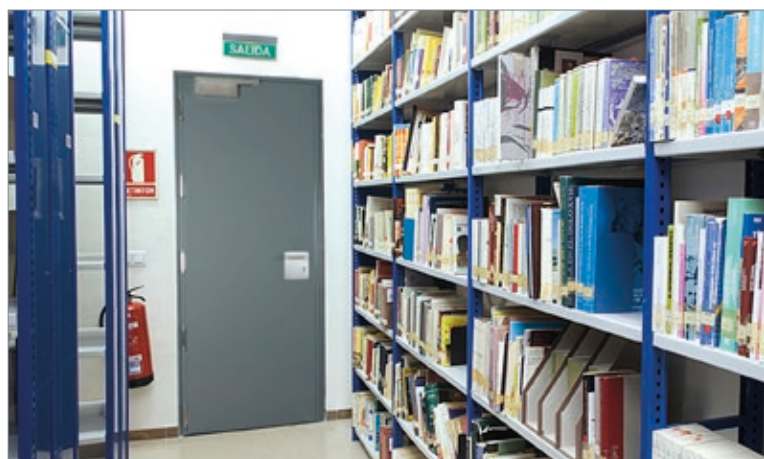
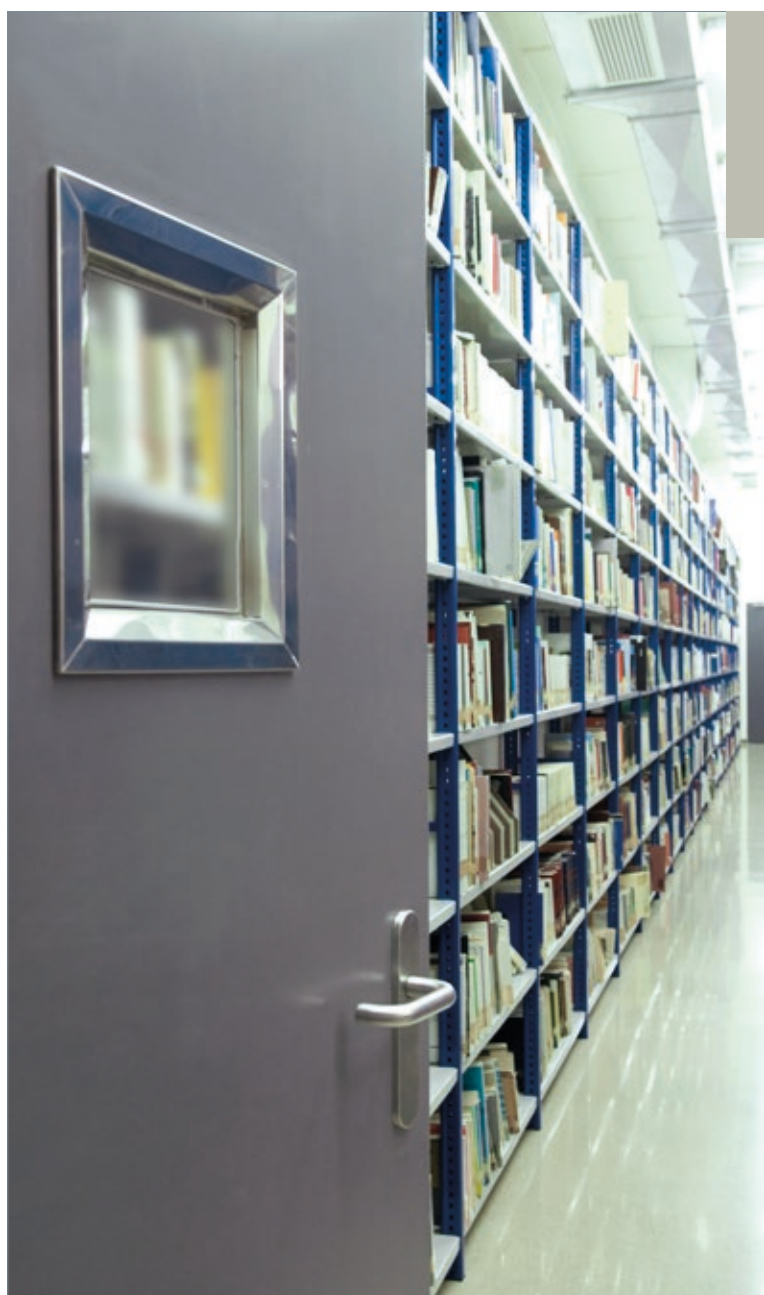
Turia Premium is the door model with the highest mechanical resistance and smoothness of operation of the Turia range. It has the fire classification of EI₂ 60 and 120 C5.

Three 1mm thick plates are used for the construction of the leaf, assembled together without the use of welding. The thickness of the same is 75mm.

Both its 5 hinges with CE marking, and the lock and the door handle are made of stainless steel. Corner frame model CS5 ready to be installed on site with mortar (EI₂ 120) or by screwing it on an approved metallic sub-frame (EI₂ 60), supplied with the door.

Other RAL to select





Turia DH DSA

Fire Door EI₂ 60 Double Leaf Double Opening Sense



Every leaf opens in the running direction. It is deal for hallways and busy passageways.

Double Leaf Fire door and Double Opening Sense with EI₂ 60 classification. The 63mm thick leaf is constructed with two 0.8mm steel plates assembled without welding. It assembles 3 hinges of their own design and CE marking.

The frame is a combination of the CS5, anchored to an outer profile called C7DS. It does not need a lever handle, lock or closing selector, but optionally they can be installed.

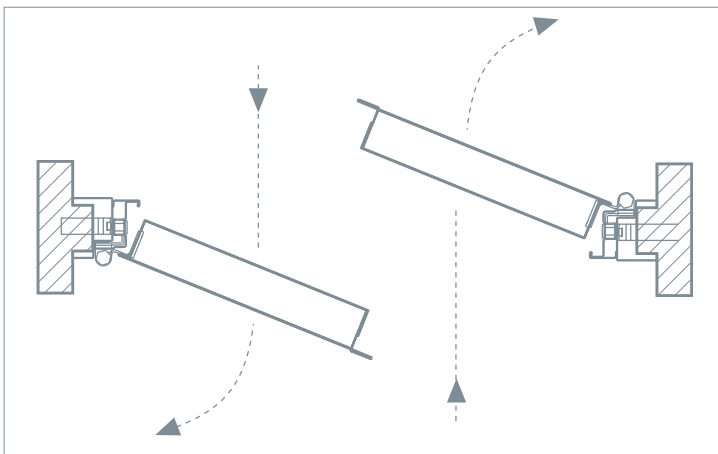
Antifinger

9010 White

Stainless Steel

Other RAL to select





Fono-Turia

Acoustic Fire Door EI₂ 60-90 36 dB and EI₂ 120 39 dB



Door that combines the fire resistance EI₂ 60-90-120 with an acoustic insulation of up to 39 dB.

Fire Door with acoustic performance, available in 1 leaf with 3 classifications: EI₂ 60 and EI₂ 90 with 36 dB and EI₂ 120 with 39 dB, tested under the Standards UNE-EN1634-1:2000, UNE-EN ISO 140-3:1995 and UNE-EN 1191:2000.

63mm thick leaf, built with two 0.8mm steel plates, mounted on a CS5 corner frame. Assembles 3 own design hinges with CE marking.

Antifinger

9010 White

Stainless Steel

Other RAL to select





Leaf type	Fire resistance	Acoustic Insulation
60S	60	36 dB
90A	90	36 dB
120A	120	39 dB



Sigma

Paneled Fire Door EI₂ 30-60-90-120



Paneled Fire Door with EI₂ 30,
60, 90 and 120 classification.

Fire Door coated with a 0.7mm High Pressure Layered Laminated Panel that gives it a personal finish and a great scratch, abrasion and impact resistance, low maintenance and classification of up to EI₂ 120.

It has a wide range of smooth finishes, woods and abstract designs, as well as the possibilities to customize the design of the panel, keeping the properties of the laminate intact.

Other RAL to select

Stainless steel
frame

Formica Laminate
Sheet



Finishes for the laminated panel, check the Formica Door Collection range.



The panels adhere on a leaf made up of two 0.8mm thick sheets and assembled without welding. The set is topped with a stainless steel or lacquered color perimeter profile. The total thickness of the leaf is 66mm.

CS5 lacquered corner frame or stainless steel CS65. It has a minimum of 3 own design hinges and CE marking, in color or stainless steel.



Rodas

Sliding Fire Door EI₂ 60



1 or 2 Leaf Sliding Fire Door,
with pedestrian gate option,
that allows to cover from small
holes to large openings.

The panels that make up the 63mm thick leaves are constructed by joining two 1mm sheets without the need of welding. It has an EI₂ 60 fire resistance classification according to the Standard UNE-EN 1634-1:2000.

It offers great possibilities for customization and adaptation to the work requirements, such as the anchoring system of the support elements, closing shock absorbers, speed controllers, drive automation (automatic, semi-automatic or manual), location of the counterweights, sense of the pedestrian gate opening, etc...

Antifinger

9010 White

Other RAL to select





Turia meter door

Fire Door EI₂ 30-60-90-120



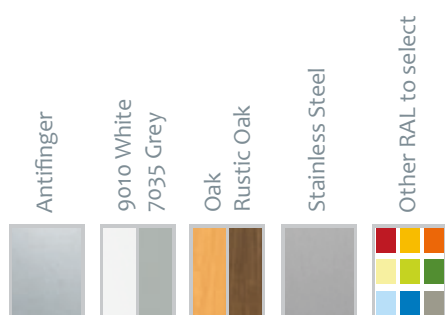
1 or 2 Leaf Reversible Meter Door EI₂ 30-60-90-120 C5.

The Turia Meter Door is manufactured in a single and double leaf and is the one that offers greater manufacturing possibilities and greater resistance.

The 63mm thick leaf for EI₂ 30, 60 and 90, is built with 2 steel plates with 0.8mm thick anti-finger protection and assembled without welding. For the EI₂ 120 classification, the leaf is constructed by adding an additional piece called “double case”, that gives the leaf a total thickness of 74mm.

It incorporates CF50, Fire door lock, nylon shield and cylinder with a key, which allows the assembly of all kinds of optional lever handles.

The number of hinges varies depending on its dimensions, mounting at least 2, in a CS5 corner frame closed on all 4 sides.



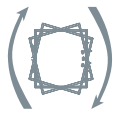
Lex meter

1 Leaf Reversible
Meter Door EI₂ 60

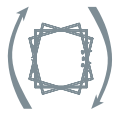


It has a fire resistance of 60 minutes. They have its reversibility as a main feature.

door



Basic meter door



1 Leaf Reversible
Meter Door EI₂ 60



62mm thick leaf, constructed of two 0.7mm thick galvanized steel sheets with anti-finger protection, assembled together without welding. Cam lock with triangle key, centered on the leaf.

It mounts two 3mm thick galvanized steel own design hinges, with CE marking, and an anti-crow bar bolt among them. CS5 corner frame closed on all 4 sides.



It has a fire resistance of 60 minutes. In addition to its lightness, it has its reversibility as a main feature.

38mm thick leaf, constructed of two 0.5mm thick galvanized steel sheets, assembled together without welding. Cam lock with triangle key.

It mounts two 2.5mm thick galvanized steel hinges, mounted in an offset manner that gives it reversibility. CS4 frame closed on all 4 sides.

CoBo System

Concealed Hinge Combination (BO) and Hidden Door Closers (CO)



Cobo System: possibility of integrating concealed hinges and hidden door closers.

The Concealed Hinge Combination (BO) and the Hidden Door Closers (CO) form the so-called CO-BO System. The concealed hinges, as they are not exposed, give greater security to the doors installed in locations with exit places to the outside, eliminating the possibility of its manipulation.

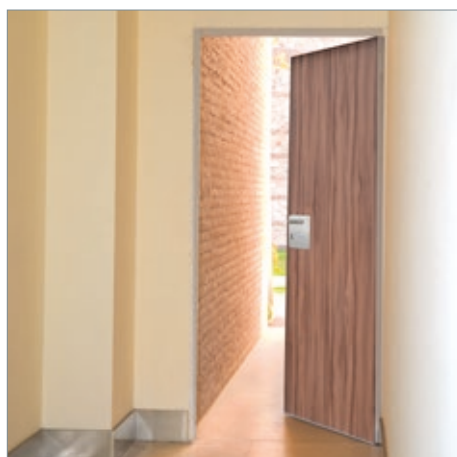
The hidden door closers, embedded in the upper part of the leaf, go completely unnoticed and, in the case of the double leaf, the closing selector is also integrated inside the leaf. Allowing easy access to it and greater security.

Antifinger

Stainless Steel

Other RAL to select





Accessories

Fire Doors

To improve the performance and have the option to customize the Fire doors, always complying with the requirements imposed by the regulations in force, Andreu offers a wide range of certified accessories from where you can choose.

PEEP HOLES



Glazed, circular, square or rectangular element, which allows the passage of light and vision, without prejudice to the fire behavior of the whole fire door.

Available in EI₂ 30, 60, 90 and 120, with a different glass thickness for each type of fire classification.

ELECTROMAGNET



Safety element connected to the power grid, whose function is to keep the door open in those areas with a high traffic density so that, in case of power failure, either by fire or by order of a control unit, releases the door to close automatically.

CONCEALED HINGE



Designed and patented by Andreu, it is designed to adapt to the whole Andreu Fire Door range with CS5 and/or CS65 frame, as well as to the Multi-purpose NEO door. It is housed inside the frame and goes completely unnoticed with the door closed.

It gives a greater security to the doors in locations with access to the outside, as they are not exposed, eliminating the possibility of its manipulation.

FIRE DOOR GRIDS EI₂ 30, 60 AND 90



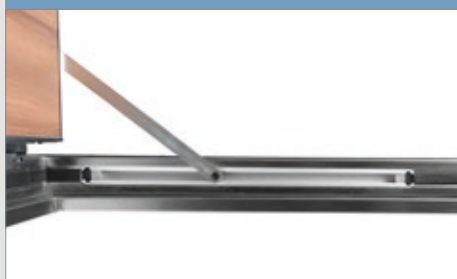
Fire Door Grids allow ventilation through the doors, keeping their resilience to fire intact. They are composed of a number of horizontal intumescent sheets with a perimeter frame that ensures absolute tightness in case of fire. Fire Classification EI₂ 30, 60 and 90.

DOOR CLOSERS



Accessory installed in the frame and on top of the leaf, that controls and ensures the closing thereof. It has a CE marking and offers a various types of installation and strength. The choice of the same must be done based on the size and weight of the door as well as on the level of use of the set: moderate, frequent or intensive.

HIDDEN DOOR CLOSERS



The Eco Multi-genius door closers, of 2-5 strength, are embedded in the upper part of the leaf and the guide is integrated in the frame, the set going completely unnoticed.

It can be installed on doors with a single and double leaf. In the latter case it also has a Closing Selector and, optionally, electromagnetic retention device.

As in the case of concealed hinges, this element can only be installed in the Andreu Fire Door range with CS5 and/or CS65 frame.

CLOSING SELECTOR



It is a mechanism that, in double leaf doors, ensures the correct order of closing the leaves, blocking the active leaf and releasing it only when the inactive has closed.

All of the closing selectors installed in Andreu Fire Doors comply with Standard UNE-EN 1158 and have their corresponding CE marking.

PANIC BAR



Drive system designed to allow the immediate opening of the door in an emergency situation.

It can be installed on doors of 1 or 2 leaves. We have a variety of models and finishes.

LEVER HANDLES



The lever handles of the Fire Doors consists of metallic supports, shields, high quality plastic handles and cylinder with its set of keys.

However, the doors can be adapted to a variety of existing drives on the market.





Multi-purpose

Life for your building

The search for harmony with the environment as well as different accessories and configurations, are important when deciding on one door or another.

In Andreu we know so, and that is why we have over 40 years' experience offering a wide variety of Multi-purpose doors, always customer-oriented, with a wide range of finishes.

These Multi-purpose doors are designed for all types of housing, industrial environments, warehouses, schools, garages, public buildings, and countless applications in all of the areas of modern architecture.

Ensamblada



It is the first Multi-purpose door of the Spanish market. Adjustable to any need and space.

This is the most versatile Multi-purpose door of the range. This door model defines the manufacturing system created in 1972; assembling the leaf without welding, starting from 2 steel plates.

It is manufacturable in a version of 1 or 2 leaves, with or without ventilation and in standard or special measurements. It is ideal to satisfy any kind of openness and space dimension.

38mm thick sheet, constructed with two 0.5mm thick galvanized steel sheets. It is available in CS4 corner frame or C70 wrapping frame. The set has two or three 2.5mm thick steel hinges, depending on the size of the door.

Galvanised

9010 White

Oak
Rustic Oak

Other RAL to select





Office



This is a Multi-purpose door, modern and functional, with a variety of finishes and stainless steel series fittings.

Door with great potential for manufacturing thanks to the variety of finishes it offers and its wide range of stainless steel fittings. It has versions with 1 or 2 leaves, with or without ventilation and in standard or special measurements. It also offers a variety of installation configurations.

50mm thick leaf, constructed by joining without welding. It has two 0.8mm thick galvanized steel sheets.

It mounts three 2.5mm own design stainless steel hinges, on different frame models: CS4 corner frame and the CO7, CO9 or CR8 non-corner frames. In every case with rubber seal providing excellent closing smoothness.

Stainless Steel

Other RAL to select





Office Slide



Sliding door with a smooth,
quiet and precise glide.
Designed for sites where the
door cannot invade the interior.

Smooth and precise sliding door, with a high level of finish
and the customization possibilities of the Office range.

It is manufactured in 1 and 2 leaves with or without
ventilation. 38mm thick leaf, assembled without welding,
with 0.8mm thick steel plates, and an inner filling that gives
it high mechanical, thermal and acoustic benefits.

The installation at work can be done on a specially designed
sub-frame or directly to work.

The double leaf simultaneous opening system, of their
own design, is worth mentioning among its wide range of
accessories.

Stainless Steel

Other RAL to select





Office Vaiven



Door for spaces with high traffic
in both directions.

A 38mm thick leaf without overlap, constructed with two 0.7mm thick galvanized steel plates, assembled without welding. It incorporates a polyvinyl weather-strip on the edge, which smoothes the closing while it seals the set.

With versions of 1 and 2 leaves, with or without ventilation and with the possibility of special measurements and accessories, it comes to expand the already wide range of Multi-purpose doors, offering a high level of finishing and customization options.

It has 2 or 3 double-action hinges on each leaf, depending on the size of the door, with adjustable spring force. These are supplied as standard in silver aluminum, providing an option in other finishes or in stainless steel.

Stainless Steel

Other RAL to select





For starters, it does not have any drive, but there is the option of mounting a barrel lock with or without key, with the possibility of combining it with a stainless steel square plate.

It offers 2 models of frame, depending on the type of installation. The CS7V corner frame and the C7V non-corner frame. They both come prepared with both talons and with a screwing system for the set or with a specific sub-frame or directly to work.



Stam



Multi-purpose door with a light drawing. Ideal for all types of facilities.

A 38mm thick leaf, assembled without welding, simple and functional. It is characterized by a light drawing of rectangular lines, on one or both sides, as well as by the handle set with stainless steel rosette. All of this gives it a stylish design, tailored to the market demands.

Available with CS4 corner frame or C70 non-corner frame, with the option of special frames. In all the cases it incorporates anti-crow bar bolts and a minimum of three 2.5mm thick steel hinges. The set is completed with a chloroprene seal in the frame, which provides a smooth closing and improves the sealing capacity.

9010 White
7035 Grey

Oak
Rustic Oak

Other RAL to select





Neo



Multi-purpose door with the robustness and aesthetics of a Fire door.

63mm thick leaf, assembled without welding, with two 0.7mm thick steel plates and anti-finger protection.

Versions of 1 and 2 leaves, with or without ventilation and with the possibility of special measurements and accessories.

It mounts 2 or 3 Fire door type hinges with CE marking and anti-crow bar bolts, on a 1.5mm thick CS5 frame. This one comes prepared with both talons with screw system to the door or to a specific sub-frame or directly to work. All this gives the door high mechanical strength.

Antifinger

9010 White
7035 Grey

Oak
Rustic Oak

Other RAL to select





Accessories

Multi-purpose

The Multipurpose doors are designed to be placed in a myriad of applications in all fields of contemporary architecture, and for this reason it is necessary that the client has a wide range of accessories to customize your door.

PEEP HOLES



Accessory that allows the passage of light and allows visibility through the door. Several possibilities of measurements are presented: round, square or rectangular.

VENTILATION



The Multi-purpose doors with ventilation have horizontal openings that allow the ventilation of the enclosures. The slits do not allow the passage of water but do allow the airflow.

There are standardized measurements, but other dimensions can be ordered on request.

ELECTROMAGNET



This safety mechanism, connected to the power grid, allows the passage of current through the same, to keep the door open. In case the power stops, the leaf is released, allowing its automatic closing.

DOOR CLOSER



Accessory installed in the framework, on the top of the leaf, that controls and ensures the closing of the same. It allows a controlled closing of the leaf, both in the models of one and double leaves. It does not require CE marking. The choice of the same should be done based on the size and weight of the door.

CLOSING SELECTOR



Mechanism installed on the frame and in the upper part of a double leaf door, which controls and ensures the closing of the active sheet on the inactive leaf. It can be as a guide or arm.

HANDLE SET



The drive system in the Ensamblada doors is composed by a wide variety of handles and shields' models. All of them manufactured in high strength and quality materials.

HIDDEN DOOR CLOSER



In the Multi-purpose doors' family, this accessory can be installed only in the NEO model door. Installed in the frame and on top of the leaf, controls and ensures the closing of the same. It offers various types of installation and strength. The choice of the same should be done based on the size and weight of the door, and the level of use of the set: moderate, frequent or intensive.

HIDDEN HINGE



Designed and patented by Andreu, it is designed to fit in the Multi-purpose family of the NEO model door that has a CS5 frame. It is housed inside the frame and goes completely unnoticed with the door closed.

Gives greater security to the doors in locations with an outlet to the outside, it is not exposed, eliminating the possibility of its manipulation.

BASEBOARD



A stainless steel accessory in single or double versions, smooth or ventilated.





Residential

Safety and Elegance

To adapt the accuracy of the technique to the whims of the design, to meet the needs of each home and the requirements of each architectural project is key for those aspiring to find new decorative solutions in the field of metallic doors.

To personalize a top quality offer, to contribute the beauty of forms to the security of steel, without sacrificing a perfect coexistence with the environment, that is, today, the great challenge of the industrial design in the manufacture of metallic doors to access housing.

For all that, Andreu has directed all its efforts to a quality production focused on the innovation and customization of the designs.

Versate



A security door of 1 and 2 leaves, with up to 5-locking points.

52mm thick leaf, assembled with two 1mm steel plates. Security lock embedded with anti-drilling shield on the outside. Possible lock at 1, 3 or 5 points.

It has 2 steel hinges with brass trim finish adjustable in 3 directions, and 2 anti-crow bar bolts.

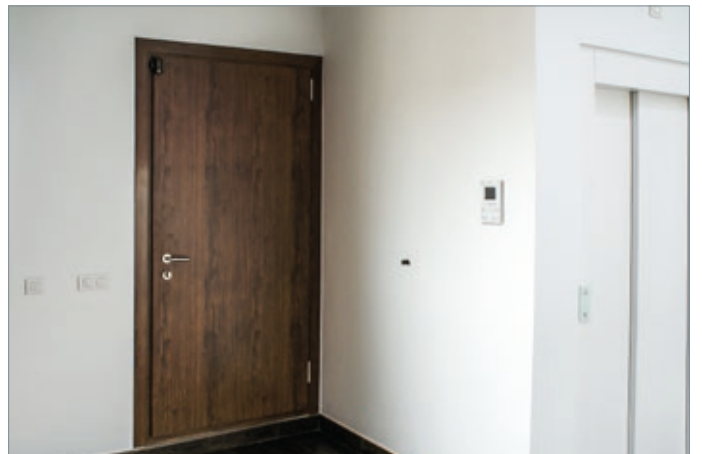
1.5mm thick CR8 frame incorporates rubber seal to ensure a smooth and airtight closing and a system to screw the door either to a specific sub-frame, or directly to work. All this gives the door high mechanical strength.

9010 White
7016 Grey

Oak
Rustic Oak

Other RAL to select





Line



Security door made of steel,
with a modern design of
horizontal or vertical lines.

52mm thick leaf, assembled with two 1mm steel plates.
Security lock embedded with anti-drilling shield on the
outside. Possible lock at 1, 3 or 5 points.

It has 2 steel hinges with nickel trim finish adjustable in 3
directions, and 2 anti-crow bar bolts.

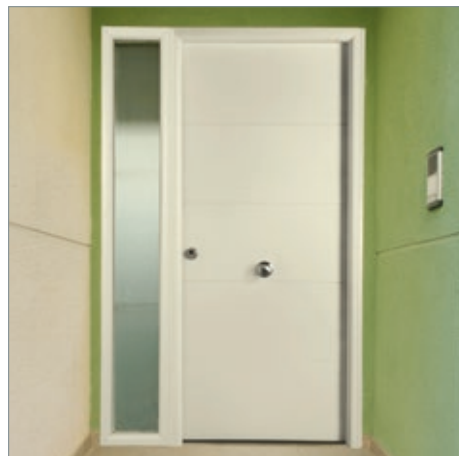
1.5mm thick CR8 frame incorporates rubber seal to ensure a
smooth and airtight closing and a system to screw the door
either to a specific sub-frame, or directly to work. All this
gives the door high mechanical strength.

9010 White
7016 Grey

Oak
Rustic Oak

Other RAL to select





Compact



Security door with a Provençal design, and a wide range of finishes, colors and accessories.

53mm thick leaf, assembled with two 1mm steel plates. Security lock embedded with anti-drilling shield on the outside. Possibility of locking at 1, 3 or 5 points.

It has 3 steel hinges with brass trim finish adjustable in 3 directions, and 2 anti-crow bar bolts.

1.5mm thick CR8 frame incorporates rubber seal to ensure a smooth and airtight closing and a system to screw the door either to a specific sub-frame, or directly to work. All this gives the door high mechanical strength.

9010 White
7016 Grey

Oak
Rustic Oak

Other RAL to select





Rustik



Security door of 1 or 2 leaves,
with a rustic design.

52mm thick leaf, assembled without welding with two 1mm steel plates. Embedded security lock with the possibility of locking at 1, 3 or 5 points, with an anti-drilling safety shield on the outside, all in a black finish.

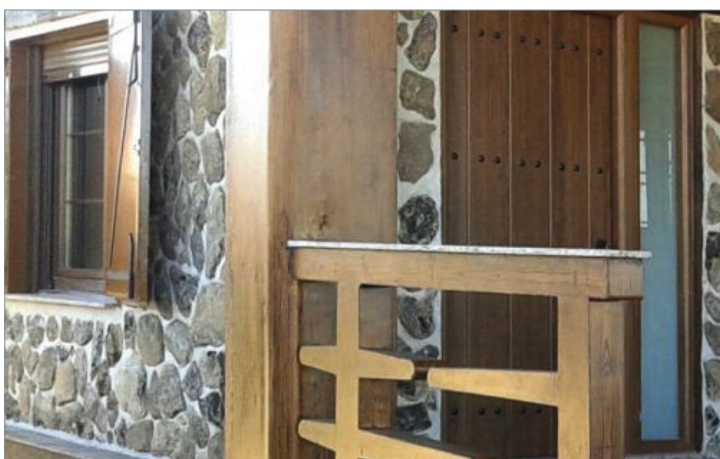
It has 2 steel hinges with black trim finish, adjustable in 3 directions and CE marking, and 2 anti-crow bar bolts.

1.5mm thick CR8 frame incorporates rubber seal to ensure a smooth and airtight closing and a system to screw the door either to a specific sub-frame, or directly to work. All this gives the door high mechanical strength.

Oak
Rustic Oak

Other RAL to select





Hispani



Paneled door that combines the strength and safety with the aesthetics and resistance of the H.P.L.

Paneled Residential Door with 0.7mm thick High Pressure Layered Laminated Panel, with a wide range of smooth finishes, wood and abstract designs, besides the possibility to customize the design of the panel, keeping the properties of the laminate intact. This gives it a personal finish and a high resistance to scratching, abrasion and impact, without the need of maintenance.

The leaf is assembled without welding with two 0.8mm steel plates, coated with two 2mm laminated panels and clamped perimetrically with 0.8mm thick steel profiles. The total thickness of the leaf is 66mm.

Other RAL to select

Stainless steel
frame

Formica Laminate
Sheet



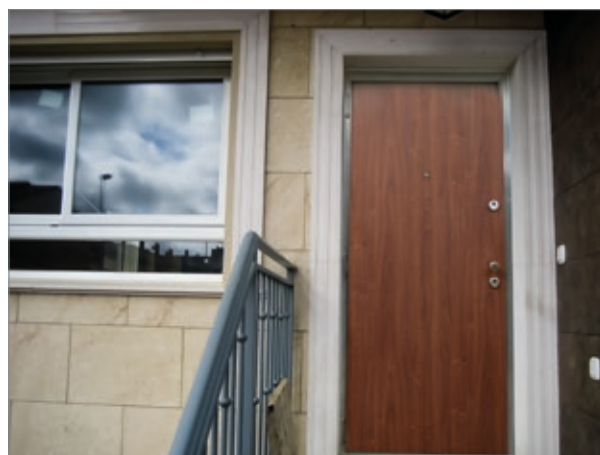
Finishes for the laminated panel, check the Formica Door Collection range.





It has 2 independent nickel finished locks, with the possibility of 2, 4 or 6 locking points, and 2 anti-drilling shields on the outside.

CS5 lacquered or CS65 stainless steel corner frame. It has a minimum of 3 own design hinges and CE marking, in color or stainless steel. It comes prepared with both talons and a system to screw to the door, either a specific sub-frame or directly to work.



Forsa



High security door with 2, 4 or 6 locking points.

The leaf is 53mm thick, assembled with 1 or 1.2mm steel plates, without welding. It is available in 1 or 2 leaves.

It has an independent operation, embedded double safety lock, with the possibility of 2, 4 or 6 locking points, and 2 anti-drilling shields on the outside.

It has 2 or 3 steel hinges with brass trim finish adjustable in 3 directions, and 2 anti-crow bar bolts.

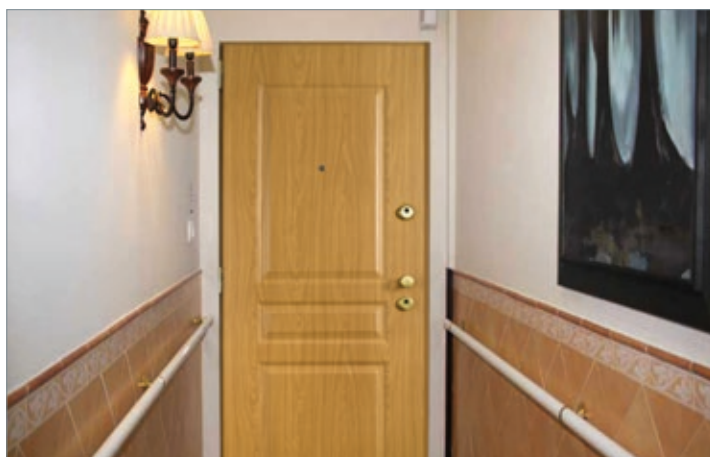
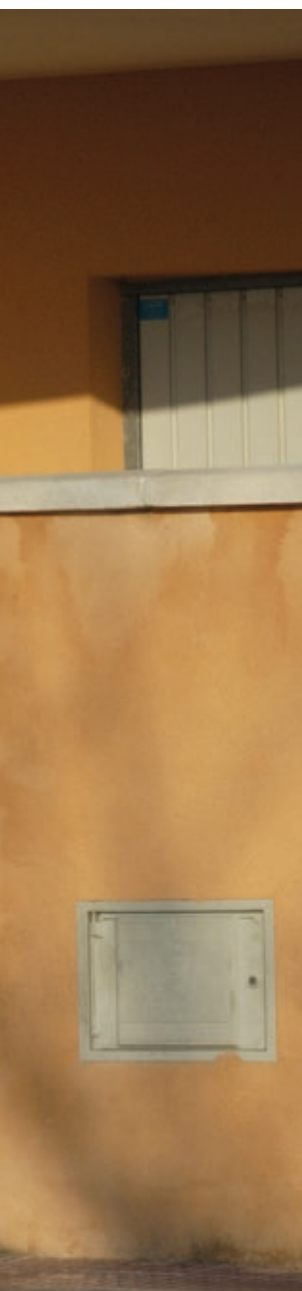
1.5mm thick CR8 frame incorporates rubber seal to ensure a smooth and airtight closing and a system to screw the door either to a specific sub-frame, or directly to work. All this gives the door high mechanical strength.

9010 White

Oak
Rustic Oak

Other RAL to select





Accessories

Residential

A wide range of accessories let satisfy demand of each home at same time that fits with architectural requirements.

Those ones that achieve decorative solutions with a prime quality offer.

HANDLE SET



The handle set of the Residential door is formed by an indivisible set of shield and handle with key. This element can be chosen in brass, nickel or black finish. The latter in the case of the Rustik model.

ROSETTE



The drive system outside the door is formed by an anti-drilling security shield.

Like the other accessories, it can be manufactured in satin nickel and polished brass finish. In the Rustik door, the finishing is black.

KNOB HANDLE



Accessory that helps to open and close the leaf. It is available in satin nickel finish and polished brass. In the Rustik door model it is in black finish as well as the other accessories of this model.

NAIL



Decorative item for Rustik doors, round metallic nail heads finished in black.

LARGE HANDLE



Accessory that is placed on the outside of the door. It helps at the time of pushing the leaf. You can choose brass, nickel or black finish. The latter in the case of the Rustik model.

DOOR KNOCKER



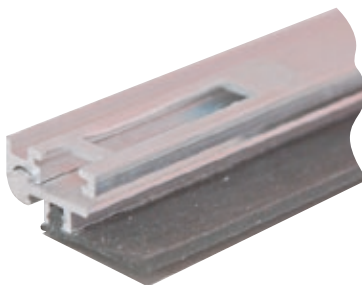
Element that serves to announce the presence outside. Optionally this accessory may be supplied in satin nickel, polished brass or black (Rustik Model).

PEEP HOLE VISOR



Wide angle peep hole visor that allows viewing the other side of the door before opening. It is available in satin nickel finish, polished brass and black.

WINDBREAKERS



Superimposed windbreakers



Drawing windbreakers

Accessory installed inside the leaf that provides an airtight seal at the bottom, stopping the wind from entering the house, as its name suggests.

LOCK



The security residential lock, embedded in the leaf, offers the possibility to close at 1, 2, 3, 4 or 5 locking points.

Manufacturing possibilities

		Plate thickness in mm	Leaf thickness in mm	Double leaf manufacturing	El ₂ 30	El ₂ 60	El ₂ 90	El ₂ 120	Acoustics	Acoustic El ₂	Wrapping frame	Corner frame	Stainless steel frame	Sub-frame	Rubber seal
Fire Doors	Delta	0.7	62												
	Turia	0.8	63/74*												
	Turia Premium	1	75												
	Turia DH DSA	0.8	63												
	Fono-Turia	0.8/1*	63/74*												
	Sigma	0.8	69					(1)							
	Rodas	1	63												
	Turia meter door	0.8	63												
	Lex meter door	0.7	62												
	Basic meter door	0.5	38												
Multi-purpose	Ensamblada	0.5	38												
	Office	0.8	50												
	Office Slide	0.7	38												
	Office Vaiven	0.6	38												
	Stam	0.6	38												
	Neo	0.7/0.8	62												
Residential	Versate	1	52												
	Line	1	52												
	Compact	1.2	52												
	Rustik	1	52												
	Hispani	0.8	69												
	Forsa	1	52												

Series

Optional

Not available

* Only in El₂ 120

** Only in El₂ 60-90-120

Double opening direction	Sliding	Reversible	Cobo System	N° hinges per leaf	Stainless steel hinges	Stainless steel locks	Bolts	1-point lock	1-point security lock	3-point security lock	4-point security lock	5-point security lock	Stainless steel finish	Paneled possibility	Drawing possibility	Fixed upper and side possibility	Ventilation possibility	Special measurements	Inclined
				2															
				3/4						(2)									
				5						(2)									
				3/4															
				3/4				(4)											
				3/4															
						(3)	(3)	(3)	(3)										
				2/3															
				2															
				2															
				2/3															
				3															
				2/3															
				3															
				2															
				2															
				2															
				3															
				2															
				2															
				3															

(1) Only in El2 120 1 leaf

(2) Only in El2 30-60-90

(3) In the gate

(4) Reinforced lock in H



andreú.es